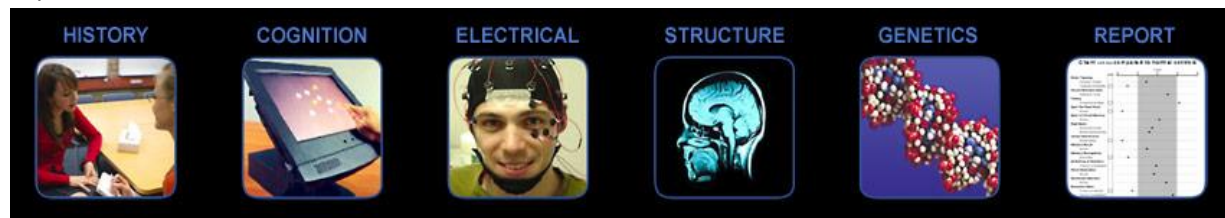


International Study to Predict Optimized Treatment (iSPOT) – in Depression & ADHD



iSPOT is the largest current Personalized Medicine research study in mental health with the potential to change the way we treat depression and ADHD. At present there is no way to objectively select the correct medication to be prescribed in the first instance. Using all the methodology in the picture below, in a standardized manner, iSPOT is assessing which brain and body markers can predict the right medication for the right person at the right time. This will help to personalize treatment in depression and ADHD.



Translational – clinicians will have less trial and error and more objectivity in selecting the right treatment.

**iSPOT: 20 sites, over 5 countries joined in one vision:
to personalize the way we treat Depression & ADHD**



Brain Resource's GOAL: Maximize study recruitment, retention, data quality, IP and scientific publications

Current Status: Over 914 patients have been enrolled into the study so far (Total 2,688 subjects).



ispotd@brainresource.com

www.AmIDepressed.org