



Personalized Medicine

International Study for Prediction of Optimized Treatment



Brain Resource has diverse proprietary platforms to test drugs, identify objective personalized Markers (to predict who will best respond to what drug) and discover new drugs.

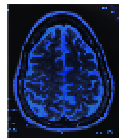
This includes the largest current "International Study to Predict Optimized Treatment in Depression" (iSPOT-D).

iSPOT-D is an effectiveness trial with the primary aim of identifying Genetic and Brain Markers (see below) that best predict treatment response in Depression.

What are the Markers?



Genetics



MRI, fMRI, DTI



Cognition



EEG/ EFP



Heart Rate Variability



Behavior and Self Report

Who is participating?

This is an open-label, randomized trial recruiting 2,000 subjects with major depressive disorder across multiple international sites. Subjects are randomised to one of the three most used treatments: Escitalopram, Sertraline or Venlafaxine XR. A group of matched healthy controls (n = 672) is also being enrolled. Site visits are at baseline and 8 weeks after treatment. Regular clinical monitoring will occur for a further 44 weeks.

Over 500 subjects have already completed the 8 week re-assessment in the US, Europe and Australian sites.

iSPOT-D has achieved substantial global recognition facilitated by Brain Resource's Standardization and Integrative methodology, the successful recruitment of patients and by having Dr A. John Rush, the world renowned Psychiatrist who was the Principal Investigator of the National Institutes of Mental Health (Washington) STAR*D trial, as Head of the iSPOT-D Publication Committee.

For more information:

If you have any other questions, please contact info@brainresource.com.